



L&T Construction & Mining Machinery

L&T 2490_{HD}

PNEUMATIC TYRED ROLLER

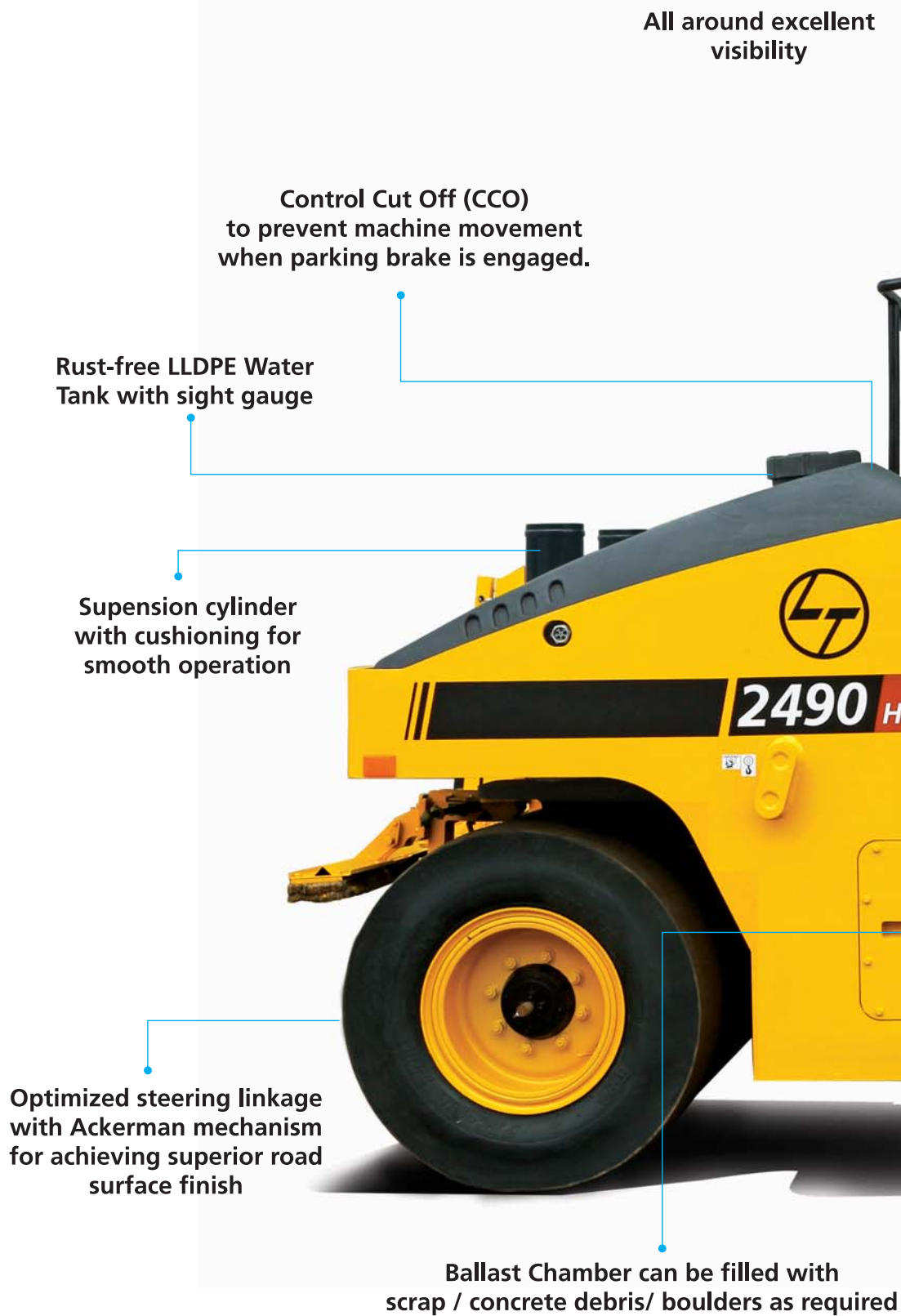
Maximum Operating Weight:	24,000 kg*
Maximum Weight Per Tyre:	3000 kg
Gross Power:	100 HP@2200 rpm
Working Width :	2042 mm

*Maximum Weight with ballast



Manufactured by

L&T Construction Equipment Limited





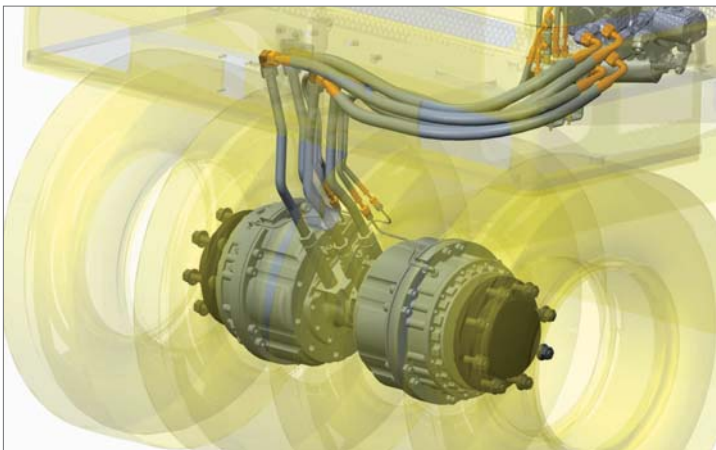
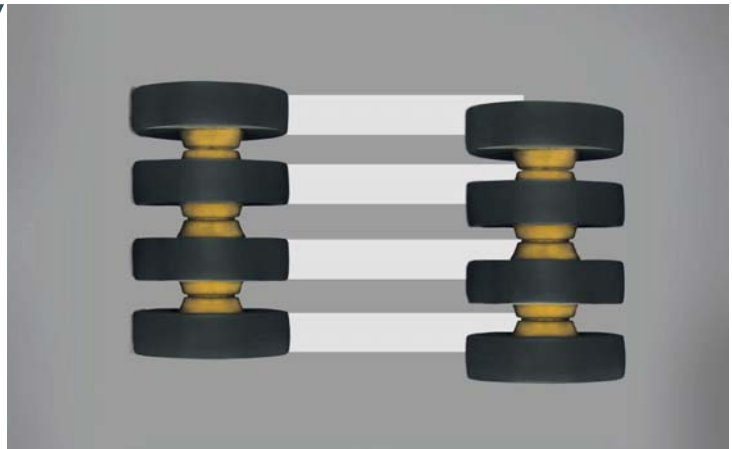


OPERATING WEIGHT

- ▶ Maximum operating weight of 24 Tonne can be achieved with ballast
- ▶ Maximum weight per tyre 3000kg

OVERLAPPING TYRES

- ▶ Overlapping tyres for complete coverage
- ▶ 4x4 front and rear tyre combination with overlap of 42 mm
- ▶ Each tyre exerts force upto 3 Tonne
- ▶ Tyre size 11,00-20 18 PR



HYDROSTATIC DRIVE

- ▶ Hydrostatic drive enables smooth machine operation
- ▶ Drive motors directly drive the tyres reducing transmission losses
- ▶ Hydrostatic power steering allows precise control

HEAVY DUTY STRUCTURES

- ▶ Heavy duty frames for long life
- ▶ Height adjustable canopy
- ▶ Sturdy and voluminous ballast chamber
- ▶ Ergonomic and cushioned operator station
- ▶ Oil spill arrestor for preventing oil spillage on bitumen surface



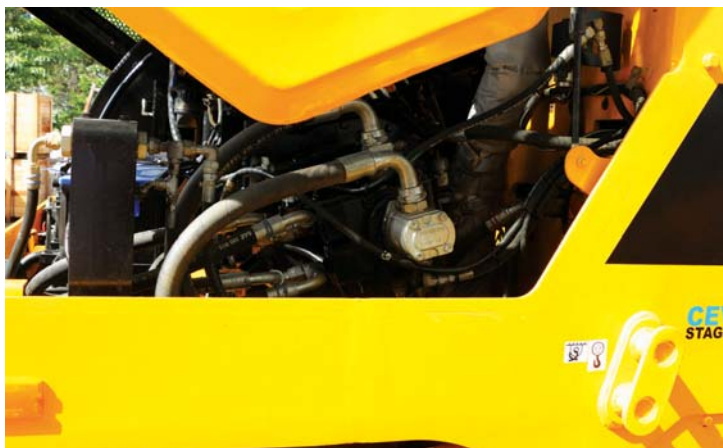
ENGINE

- ▶ Mahindra & Mahindra VNEF100, 4-cylinder, 4- stroke Inline turbocharged intercooled engine, CEV-IV compliant
- ▶ Electronically controlled pump
- ▶ Mud filter, Fuel filter and Water separator for better filtration
- ▶ Turbo Pre-cleaner is a standard fitment



HIGH PERFORMANCE HYDRAULIC COMPONENTS

- ▶ Closed circuit hydraulic system with best-in-class heavy-duty hydraulic components, enhancing productivity and reliability
- ▶ Hydraulic System designed for optimising productivity



ERGONOMIC OPERATOR CONSOLE

- ▶ Excellent all round visibility
- ▶ Large-size rear view mirrors
- ▶ Height adjustable seat with arm rest operator comfort
- ▶ All around guard rails for operator safety



SERVICE ACCESSIBILITY

- ▶ 50° Openable rear hood
- ▶ Easy access to all components
- ▶ Ground level access for diesel refill
- ▶ Turbo Pre-cleaner easily accessible



WATER SPRINKLING & SCRAPING SYSTEM

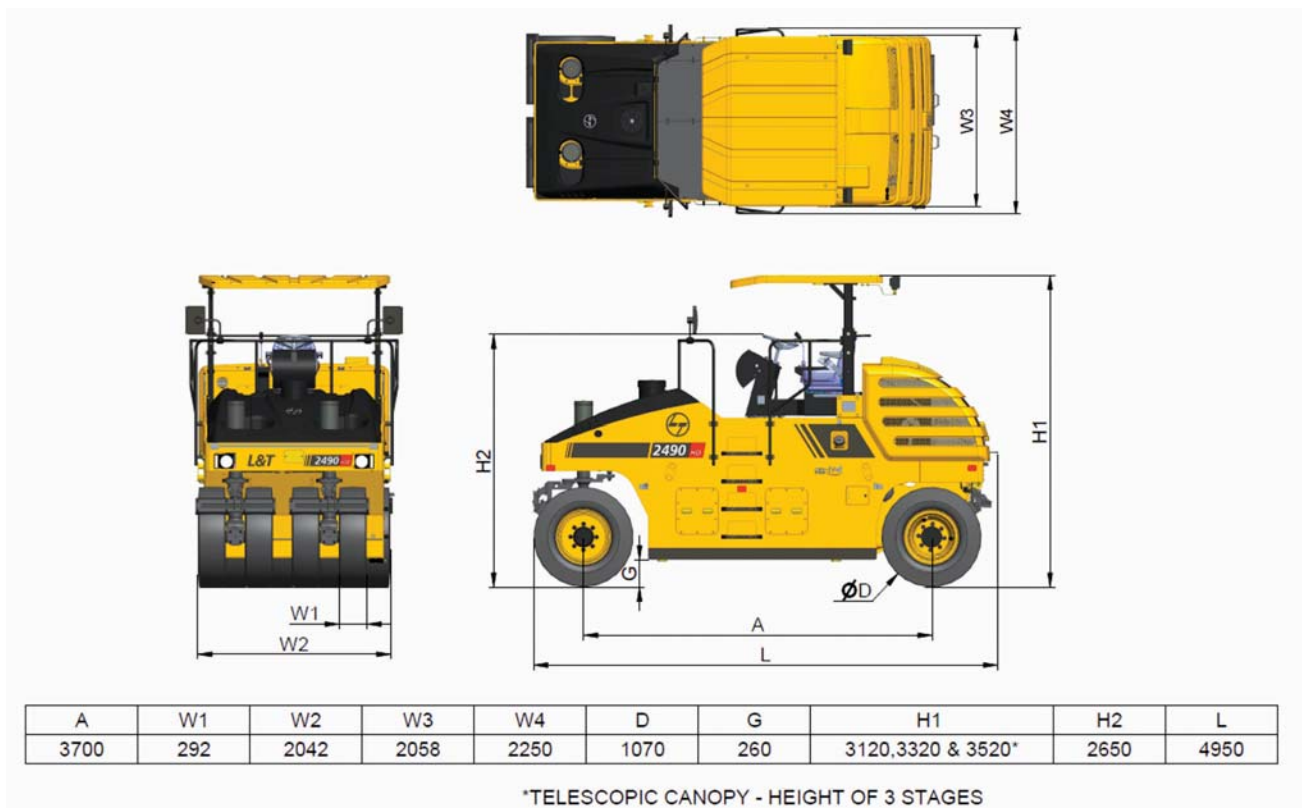
- ▶ Electrically operated diaphragm type water pump
- ▶ Sprinkler nozzle with 135° spray angle
- ▶ Easily serviceable scraper
- ▶ Infinitely variable flow control for adjusting the water flow



BRAKING MECHANISM

- ▶ Braking achieved by SAHR (Spring Activated Hydraulically Released) mechanism integral to the hydraulic drive motors

MACHINE DIMENSION



SPECIFICATIONS

ENGINE	
Make	Mahindra & Mahindra
Model	VNEF100 - CEV4
Type	4 Stroke, Inline Turbocharged & Intercooled
Bore/Stroke	96 x 122 mm
Cylinder	4
Displacement	3532 cc
Fuel Injection	CRDI
Fuel	BS - VI Diesel
Fuel filter cum Water separator	Spin-on type
Fuel pre filter	Cartridge Type
Air Filter	Dry Type with Dual Element
Engine oil filter	Spin-on type
Cooling	Liquid
Engine power (Gross)	100 hp @ 2200 rpm as per ISO 1585
Torque (Max)	420 Nm @ 1200-1500 rpm
Exhaust After Treatment system	SCR + DOC - Engine Mounted

PROPULSION SYSTEM	
Infinitely variable hydrostatic drive with variable displacement pump	
Drive Pump	Mechanical
Engine to pump ratio	Direct Drive 1:1

DRIVE SYSTEM	
Drive System	Hydrostatic
Drive axle	Rear
Drive Motor	Low speed high torque motors
Working Speed	0-8 kmph
Travel Speed	0-16 kmph
Max Gradeability	35 %

ELECTRICAL	
DC	12 V
Alternator	140 A
Battery	754 CCA as per JIS (Max 900)

SERVICE CAPACITIES	
Diesel	200 L
Hydraulic Oil	60 L
Water Tank	700 L
Engine Oil	13.5 L
Engine Coolant Oil	18 L

SAFETY	
<ul style="list-style-type: none"> All-Weather Canopy 2 point seatbelt CMVR compliant handrails & steps Automatically applied parking brake in case of engine shutdown 	

BALLAST CHAMBER	
Volume	3.5 Cum
Recommended ballast material steel scrap/ concrete debris/ boulders	

BRAKE	
Service Brake	Hydrostatic
Parking Brake	Spring Applied Hydraulically Released (SAHR)

OPERATING DATA	
Operating Weight	12500 kg
Maximum Weight	24000 kg (Ballasted)
Maximum Per tyre load	3000 kg

TYRE	
Working Width	2042 mm
Tyre Overlap	42 mm
Tyre Combination	4 (Front) x 4 (Rear)
Tyre Pressure	2 (min) to 8 (max) bar
Tyre Size	11.00-20 18 PR

STEERING	
Steering System	2-Point Pivoted
Steering Type	Hydrostatic
Steering Angle	±32°
Oscillation Angle	±4°
Inner Turning Radius	5.42 m
Min Outer Turning Radius	8.63 m
Suspension Level adjustments	±100 mm

WATER SPRINKLING SYSTEM	
Type	Pressurized spray with LLDPE water tank
Pump	Diaphragm type water pump – 1 No.
Spray Bars	Front & Rear (4 nozzles per bar)

STANDARD EQUIPMENT	
<ul style="list-style-type: none"> Maximum 3 tonne load on each tyre Fuel filling from ground level Hydrostatic Drive for machine operation Dual water pump Wide 2042mm rolling width Three stage height adjustable canopy Auto cut-off during machine neutral position 	

OPTIONAL EQUIPMENT	
<ul style="list-style-type: none"> Ground Pressure Adjustable System Tyre pressure monitoring system Vehicle health monitoring system - L&T DigiEye Coir mat for scrapers Beacon Lamp Factory ballast option 	

32, Shivaji Marg, P.O. Box 6223
New Delhi 110 015
 Tel : (011) 40819500

Aspire Towers
 Plot No: 55, 4th Floor
 Industrial Area Phase - 1
Chandigarh 160 002
 Tel : (0172) 4646846

A-28 Indiranagar
 Faizabad Road, First Floor
Lucknow 226 016
 Tel : 0522- 4929920

Monarch Building
 D-236 & 237, Amrapali Marg
 Vaishali Nagar, **Jaipur** 302021
 Tel : (0141) 4385900

Shree Ram Plaza, 2, 3 & 4
 1st Floor, Siphon Chauraha
 Bedla Road-**Udaipur** 313 001
 Tel : (0294) 2451 337, 2451 305

3-B, Shakespeare Sarani,
 P.O.Box 619, **Kolkata** 700 071
 Tel : (033) 4400 2433/22831442

Annapoorna Complex
 Plot No. 559, Lewis Road
 Bhubaneswar 751 014, **Odisha**
 Tel : 9777049626

A1/11, Degaul Avenue
 Khoirasol, **Durgapur** 713 212
 Tel : 9830057293

Milanpur Road, Bamuni Maidan
Guwahati 781 021
 Tel : (0361) 4415/4412
 8876554415

101/A, Dumardaga
 PO Booti
Ranchi 835 217
 Jharkhand
 Tel: 9771493164

L&T-House, P.O.Box 119
 191/1, Dhole Patil Road
Pune 411 001
 Tel : (020) 48544259

501, Sakar Complex
 Opp. Gandhigram Rly. Stn.
Ahmedabad 380 009
 Tel : 7949004005

AMN Tower, MIPD - 5th Floor (Q4)
 L&T Campus, Gate No. 3,
 Jogeshwari-Vikhroli Link Road,
 Powai, **Mumbai** - 400 072
 Ph : 022- 68125813/ 5817/5822

Radhadaya Complex
 Near Charodar Complex,
 Old Padra Road, **Vadodara** 390 015
 Tel : (0265) 2334 799

12, Shivaji Marg
 North Ambazari Road,
Nagpur 440 010
 Tel : (0712) 6606441/2260025

131/1 Zone II
 Maharana Pratap Nagar,
Bhopal 462 011
 Tel : (0755) 3080522

Crystal Tower, IVth Floor
 G. E. Road , Telibandha
Raipur (CG) 492006
 Tel: 9752544407

II Floor, Vasantha Chambers
 5-10-173 Fateh Maidan Road
Hyderabad 500 004
 Tel : (040) 47575064

38, Cubbon Road
Bengaluru 560 001
 Tel : (080) 46136139/37

53-13-2 First Floor, Bank Colony
 Srinivasanagar
Vijayawada 520 008
 Tel : 9061472255

D No 49-38-14/3/2, 1st Floor,
 NGO's Colony, Akkayapalem,
Visakhapatnam - 530 016
 Tel: 0891 - 2711121/124

L&T Construction Campus
 TC-1 Building, 2nd Floor,
 Mount Poonamallee Road,
 Manapakkam, **Chennai** 600 089
 Tel : (044) 40706864

No. 73, 8th Street,
 Karpaga Nagar,
 K. Pudur, **Madurai** 625 007.
 Tel: 9003944322

Post Bag 7156
 67, Appuswamy Road
Coimbatore 641 045
 Tel : 9886300106

Skybright Building, M.G. Road,
 Ravipuram Junction, P.O.Box 1723,
 Ernakulam, **Kochi** 682 016
 Tel : (0484) 4409401/409

**EQUIP-CARE**

Customer Care Number

1800 833 9990

Marketed & Serviced by:

L&T Construction Equipment**Larsen & Toubro Limited**

1st Floor Lakshminarayan Complex, 10/1 Palace Road, Bengaluru- 560 052
 Tel: (080) 22256982/83/84, 40401700

Visit: www.Lntcmb.com

L&T Construction & Mining Machinery

[Larsentoubro.cmb](https://www.instagram.com/Larsentoubro.cmb)**Zonal Offices:****Delhi** (011) 40819500**Kolkata** (033) 44002433/22831442**Pune** (020) 48544259**Jaipur** (0141) 4385900**Nagpur** (0712) 6606441/2260025**Hyderabad** (040) 47575064**Chennai** (044) 40706864